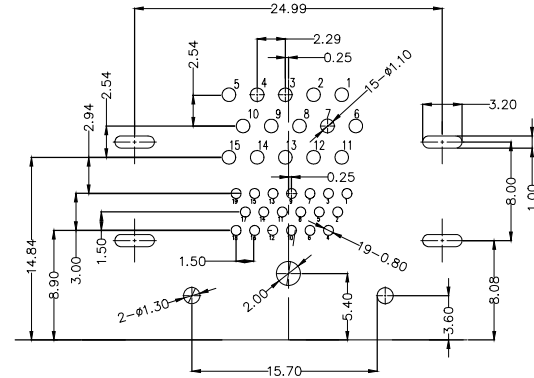
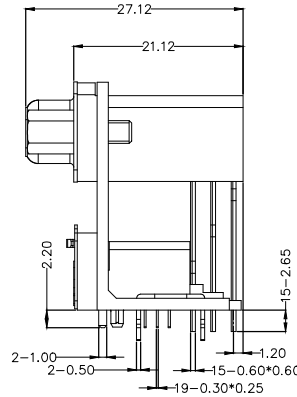
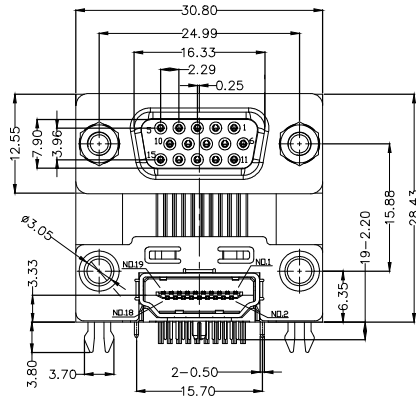
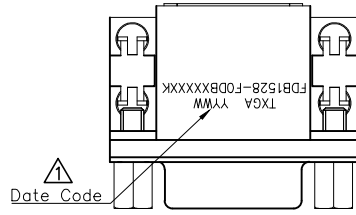
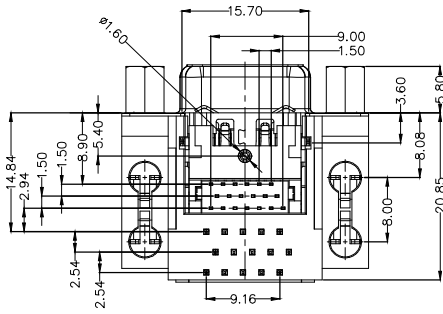


REV	LOCATIONS	DESCRIPTION	DATE	REVISER	APPD
1		Add marking code	13/JAN/25	NICK	LEO



Recommended P.C. Board Layout



### Ordering Information

FDB 15 28 - F0 D B X XX XX K  
 1 2 3 4 5 6 7 8 9 10

1	Category FDB-D-SUB Connectors	2	Circuits 15-15Circuits	3	Distinction No. 28	4	Type F0-Female	5	Assembly Layout D-DIP
6	Entry Type B-90° Angle	7	Plating 3-Selective gold in contact area, tin on tail	8	Thickness of Plating 00-Gold Flash 03-3µ" Custom plate available	9	Color-Resin K6-Black U1-Blue	10	Packaging K-Tray

### SPECIFICATIONS

#### Electrical

Current Rating: 3A AC(rms)/DC  
 Voltage Rating: 250V AC(rms)/DC  
 Contact Resistance: 25 MΩ Max  
 Insulation Resistance: 1000 MΩ MIN  
 Withstanding Voltage: 500V DC r.m.s.  
 Operating Temperature: -55°C ~ +85°C

#### Material

Housing: PBT (UL 94V-0)  
 Contact: Selective gold in contact area, tin on tail

THIRD ANGLE PROJECTION		GENERAL TOLERANCES (UNLESS SPECIFIED)		APPROVE BY	DATE	PART NO.	ITEM NO.		
		X. ±0.30	X' ±5°	LEO	29/JAN/23	FDB1528-F0DBXXXXXK	FDB1528	Building Technology Cornerstone	
DESIGN UNITS METRIC		X.X ±0.20	X.X' ±2°	CHECKED BY	DATE	TITLE			
		X.XX ±0.15	X.XX' ±1°	GISELLE	29/JAN/23	D-SUB 15PIN FEMALE+HDMI 19P/F CONN			
SCALE 5:1		X.XXX ±0.10	X.XXX' ±0.5°	DRAWN BY	DATE	THIS DRAWING CONTAINS INFORMATION THAT IS PROPRIETARY TO TXGA INDUSTRIAL ELECTRONICS(S.Z)CO.,LTD AND SHOULD NOT BE USED WITHOUT WRITTEN PERMISSION			
				NICK	29/JAN/23	REV 1 SHEET NO. 1/1			